

GENERAL NOTES

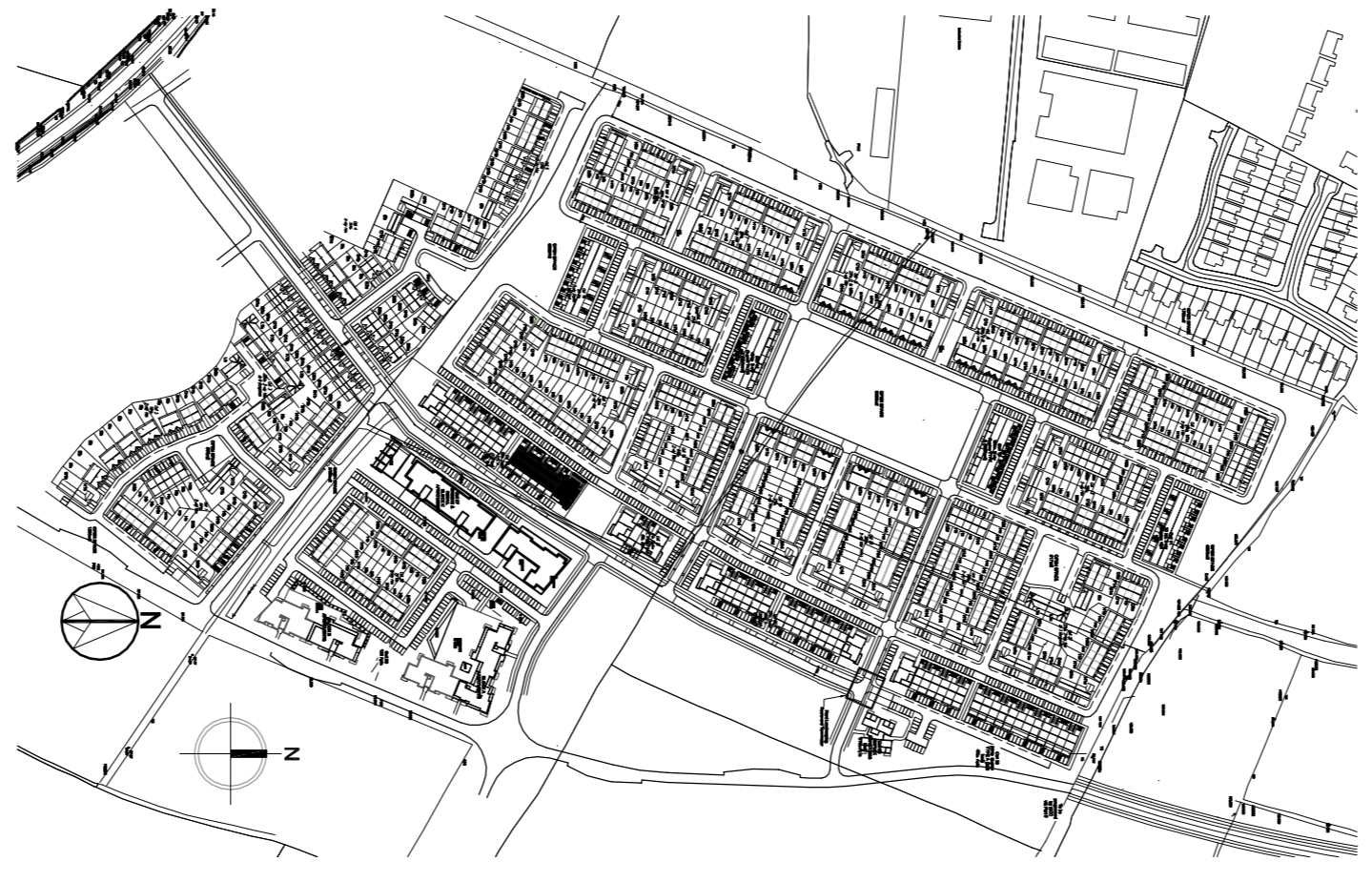
THIS DRAWING TO BE READ IN CONJUNCTION WITH ARCHITECT'S DRAWINGS, CONSULTANT ENGINEER'S DRAWINGS AND SPECIFICATIONS & LANDSCAPE ARCHITECT'S DRAWINGS
 REFER TO ARCHITECT'S SITE PLAN, FLOOR AND PLUMB FOR NORTH ORIENTATION, LEVELS GIVEN ON HOUSE TYPE DRAWINGS ARE GIVEN TO LOCAL ABSOLUTE ZERO LEVEL. FOR SPECIFIC LEVELS DEPENDING ON INDIVIDUAL UNIT LOCATION, REFER TO ARCHITECT'S CONTEXT SECTIONS AND ENGINEER'S DRAWINGS WHERE LEVELS ARE ALL GIVEN IN RELATION TO LAND SURVEYORS BENCHMARK GRADED ON MAINLINE ROAD ON/ON LEVEL.

 REFER TO SITE LAYOUT PLAN FOR NORTH ORIENTATION
 REFER TO CONSULTING ENGINEER'S DRAWINGS FOR BLOCK LEVELS

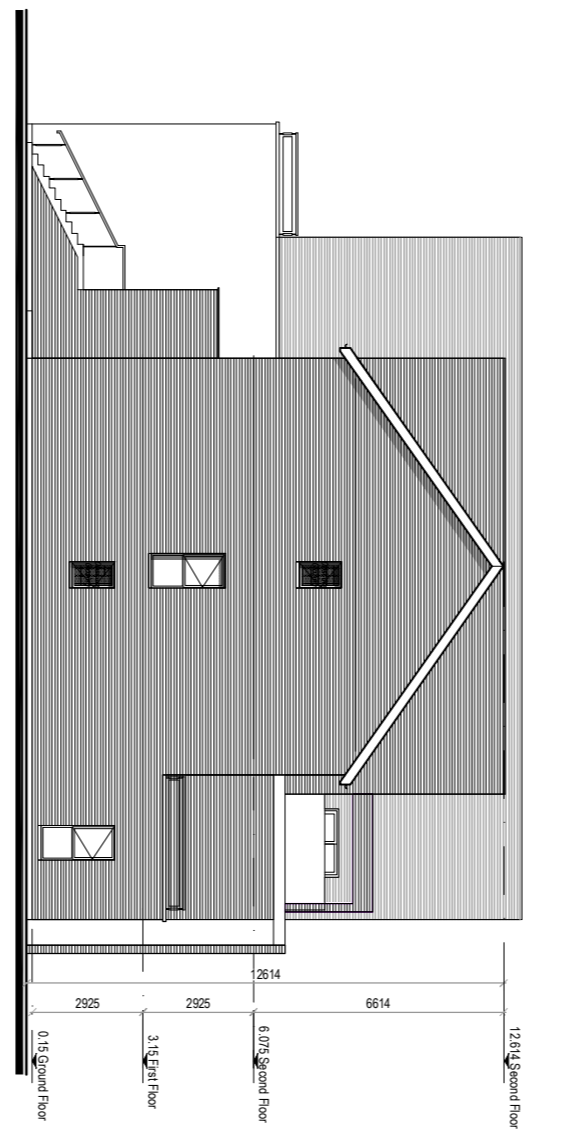
NOTES ON FINISHES:

- ROOF: TO BE FINISHED IN SLATE OR CONCRETE ROOF TILES IN SELECTED COLOUR OR SIMILAR APPROVED FLAT ROOF.
- WALLS: SINGLE PLY MEMBRANE & PRESSED METAL CORRUGS & FLASHINGS.
 SELECTED CLAY BRICKWORK WHERE INDICATED OTHERWISE.
 RENDER OR DRYDASH TO CONCEALED SIDE GABLES.
 NATURAL STONE CLADDING AS INDICATED.
- JOINERY: ALL WINDOWS AND DOORS, FRAMES AND LEAVES, TO BE ALUMINIUM POWER COATED TO APPROVED COLOUR OR UPVC OR POWER COATED TO APPROVED COLOUR.
 CURTAIN WALLING TO PERHOUSE & FEATURE CORNERS.
- RAINWATER GOODS: GUTTERS, DOWNPIPES, AND FININGS TO BE UPVC OR ALUMINIUM POWER COATED TO SELECTED COLOUR TO MATCH ROOF SLATES.
- * SOLAR PANELS: INDICATIVE SOLAR PANEL POSITION. FINAL SOLAR PANEL POSITION TO BE DETERMINED BY CONSULTING ENGINEER'S DRAWINGS. RENEWABLE ENERGY REQUIREMENTS OF BUILDING REGS PART L. SOLAR PANELS MAY BE OMITTED IN FAVOUR OF ALTERNATIVE RENEWABLE ENERGY SOLUTIONS.

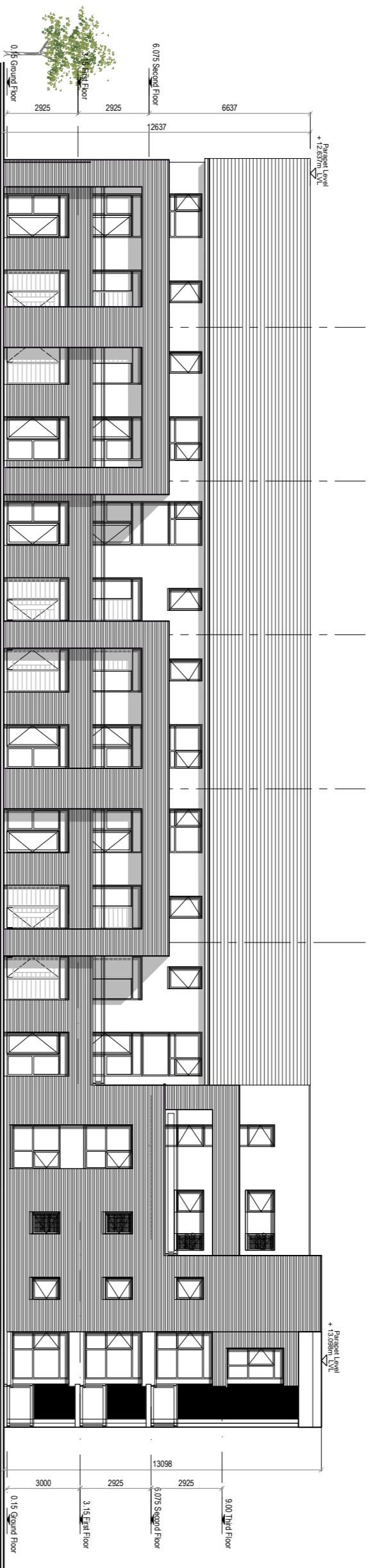
KEY PLAN (N.T.S.)



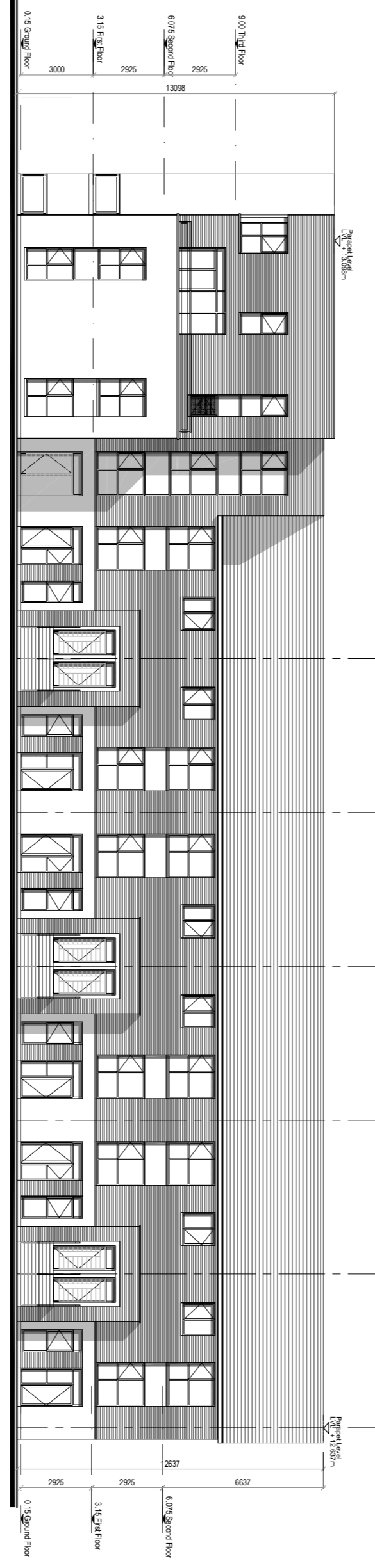
NORTH EAST ELEVATION



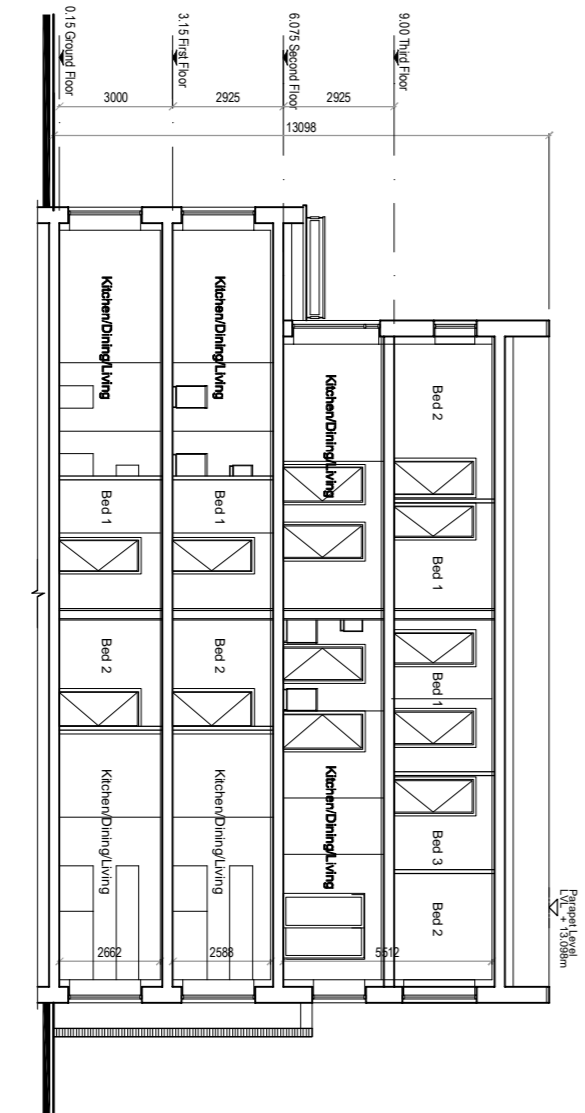
SOUTH WEST ELEVATION



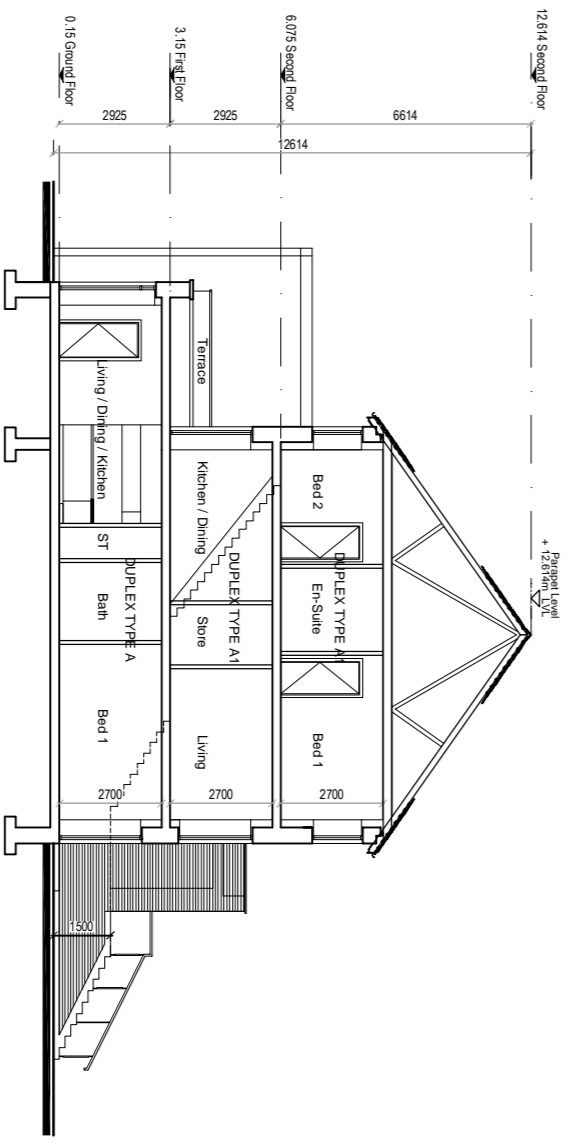
SOUTH EAST ELEVATION



NORTH WEST ELEVATION



SECTION B - B




SECTION A - A

NOTES:

DO NOT SCALE FROM THIS DRAWING. DIMENSIONS FIGURED DIMENSIONS ONLY. ARCHITECT TO BE NOTIFIED OF ALL DISCREPANCIES.

REVISIONS		
NO.	DESCRIPTION	DATE

 MCRM	IAC CROSSAN OROURKE MANNING ARCHITECTS	PROJECT TITLE	DATE	DRAWN BY
		The Willows, Dunshaughlin Proposed Duplex Car 266 Elevations & Sections	Dec'18 1:200 @ A1 16028_1	DE 204